

# Capital Project Sales Tax

Presentation of recommended projects for  
inclusion in the County's presentation  
to the Capital Project Sales Tax Commission

February 23, 2016



# Presentation Format

- Executive Committee and CPST Commission have both referenced a limit of 4 years or \$120M on proposed projects
- Prioritization of safety needs, public infrastructure, economic development, and overall benefit to public
- Projects cover all geographical areas of the County and meet numerous community needs to help increase public support in the face of potential competing interests
- If CPST process is ultimately not successful, the County will likely need to move forward with these projects anyway through alternative funding mechanisms

# Presentation Format

- If CPST process is ultimately not successful, the County will likely need to move forward with these projects anyway through alternative funding mechanisms (GO debt, grants, reserve fund expenditure, etc.)
  - Demonstrates a “need” and not a “want”
- Significant benefit to Beaufort County taxpayers by utilizing sales tax payments made by visitor/tourists

# US 278 Improvements

- A. HHI Bridge Replacement/Widening
- B. Pinckney Island Roadway Improvements
- C. US 278 Widening from Jenkins Island to Squire Pope
- D. Jenkins Island (Windmill Harbour) Roadway Improvements
- E. Implementation of US 278 Safety Study Recommendations (RSA Study)

# US 278 Bridge Preliminary Engineering Widening/Replacement

- Estimated Cost: \$5,000,000
- Will provide planning, engineering and environmental design work related to replacement and widening of existing bridges from 4 to 6 total lanes.
- 3 of the current bridges were built in 1982 and 1 in 1956.

# US 278 Bridge Widening/Replacement Preliminary Engineering



© Sandra Staas - virtourist.com

# Pinckney Island

- Estimated Cost: \$2,000,000
- 10-year visitor average = 145,000 people per year
- Difficult ability for people with trailer/boats to enter and leave the roadway without impacting traffic flow
- Could potentially receive additional funding from FHWA (federal lands access program funds)

# Pinckney Island





## US 278 Widening to Squire Pope Road

- Estimated Cost: \$4,500,000
- Extend 6 lanes for US 278 from Squire Pope to connect with Jenkins Island Widening.
- Provides for Continuous 6 lanes from end of Graves Bridge thru Cross Island Parkway
- Will eliminate vehicle delays and queueing at Squire Pope Road intersection during peak demand hours

# US 278 Widening to Squire Pope Road



# Jenkins Island (Windmill Harbour)

- Alternative 2A/Super Street Option
- Estimated Cost: \$7,900,000
- Constructed primarily within existing right-of-way for US 278.
- Includes widening of US 278 to 3 lanes in each direction on Jenkins Island which functions with planned future widening.
- All traffic enters and exits from side streets with right-in/right-out.
- Median crossovers closed with exception of two U-turn median openings.

# Jenkins Island (Windmill Harbour)



**LEGEND**

- DELINEATED WETLANDS
- ▬ PRESENT RIGHT OF WAY
- ▬ EXISTING PROPERTY LINES
- ▬ PROPOSED NEW RW
- ▬ EXISTING ROADWAY
- ▬ PROPOSED ROADWAY IMPROVEMENTS
- ▬ PAVEMENT REMOVAL
- ▬ NEW CONCRETE ISLAND
- ▬ PROPOSED TRAVEL PATTERN

MATCHLINE "A"  
SEE NEXT SHEET



JENKINS ISLAND ACCESS MANAGEMENT SYSTEM  
 BEAUFORT COUNTY, SC  
 ALTERNATIVE NO. 2A  
 MEDIAN U-TURNS  
 PRELIMINARY ENVIRONMENTAL SCREENING REPORT

DATE: SEPT. 16, 2015  
 FIGURE: ALT. 2A - SHEET 1



## US 278 Traffic Safety Study Recommendations

- Estimated Cumulative Cost: \$5,600,000
- Funds all short term, mid term, and long term improvements identified in recently finalized roadway safety audit report.
- Allows for implementation of Traffic Adaptive Management signal system

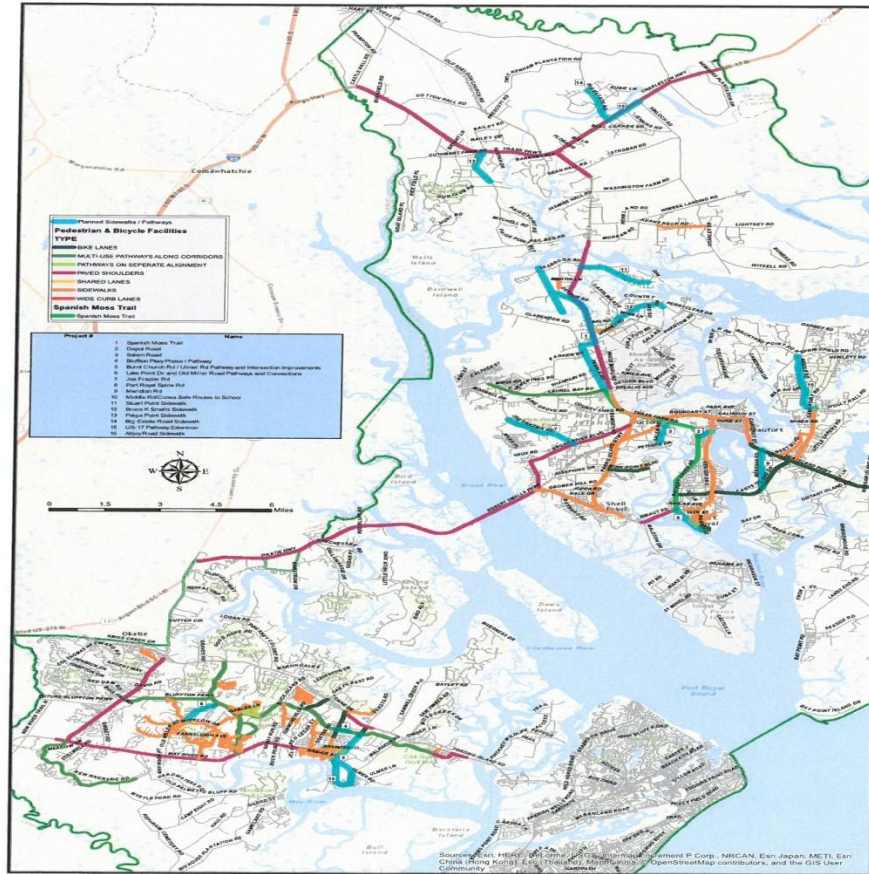
# US 278 Traffic Safety Study Recommendations



# Safe Routes to Schools

- Estimated Cost: \$4,600,000
- Will create pathways along major thoroughfares and roadways to connect neighborhoods with schools and provide for safe pedestrian travel

# Safe Routes to Schools





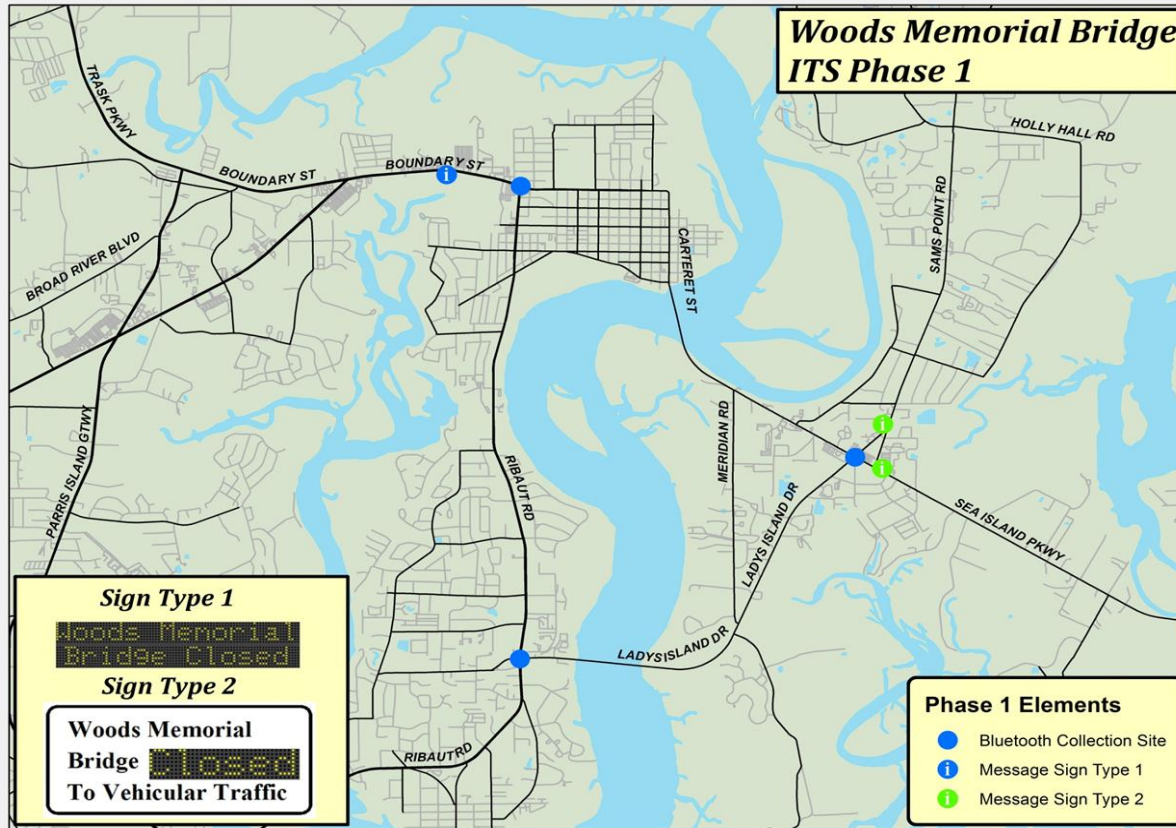
# Safe Routes to Schools



# US-21 ITS Bridge System

- Estimated Cost: \$500,000
- Allows for:
  - Advance Driver Notification System
  - Traffic Adaptive Signal System Timing
  - Emergency Vehicle Preemption
  - Travel Time and Delay Information

# US-21 ITS Bridge System



# EMS Facilities

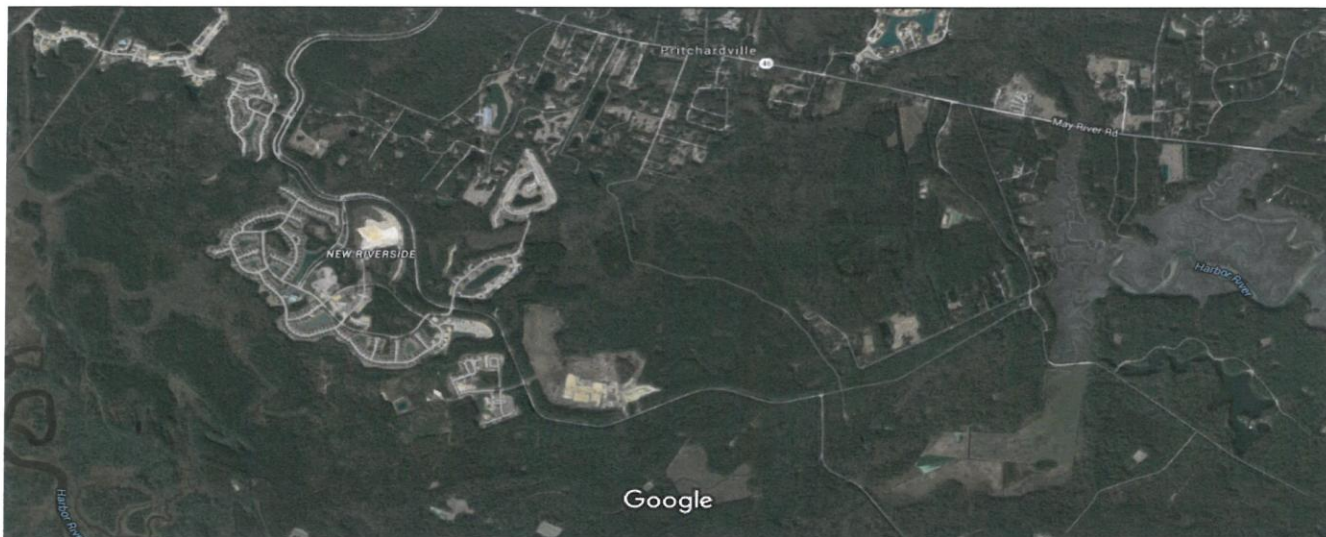
- Estimated Cost: \$6,000,000
- Will provide for one additional EMS station in the Bluffton/Pritchardville area and in the Burton area to enhance response capabilities.
- Crews and equipment have already been placed in service

# EMS Facilities

1/19/2016

Google Maps

Google Maps



Imagery ©2016 Google, Map data ©2016 Google 2000 ft

<https://www.google.com/maps/@32.2238624,-80.9664576,3748m/data=!3m1!1e3?hl=en>

1/1

# EMS Facilities



# Detention Center

- Estimated Cost: \$1,000,000
- Will provide for security upgrades and repairs to existing facility



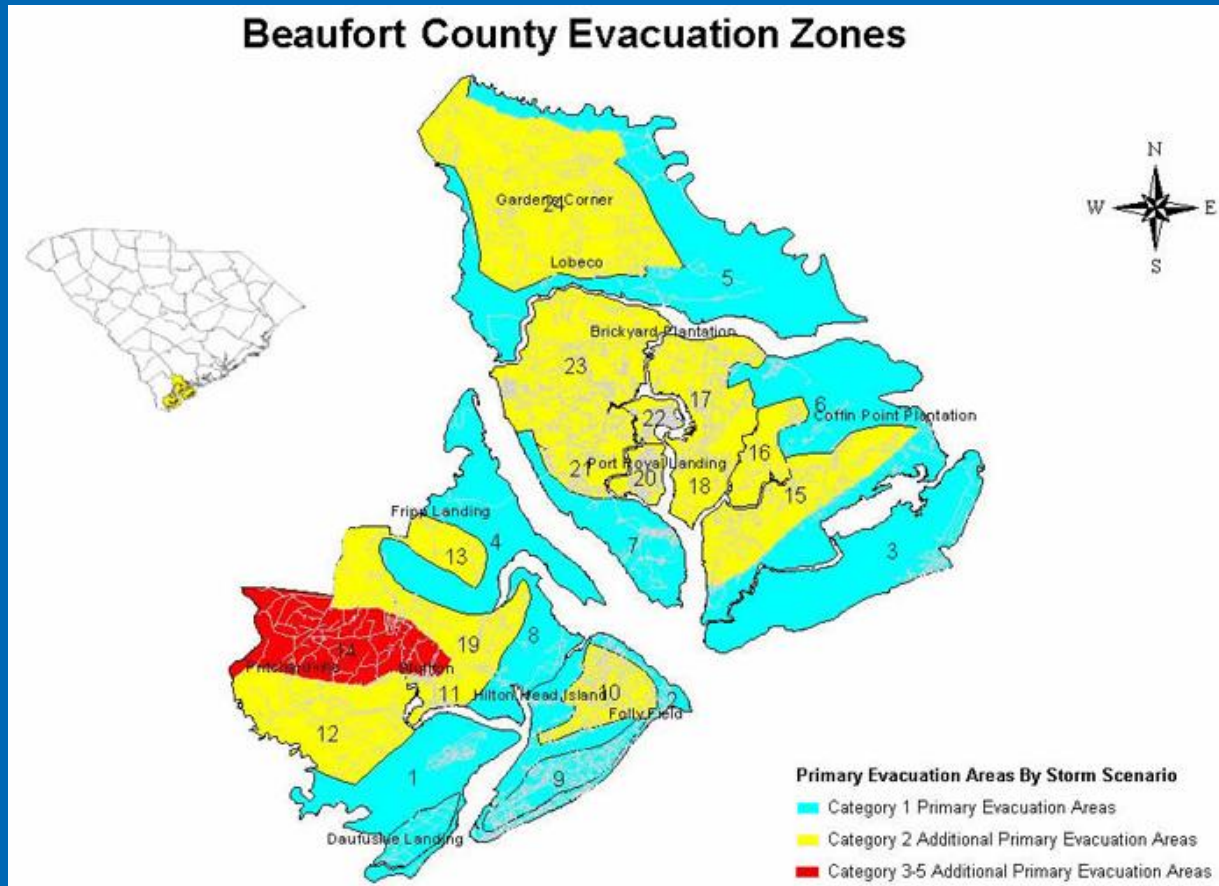
# Dark Fiber and Infrastructure Upgrades

- Estimated Cost: \$1,500,000
- Will provide for secure backup for public safety and disaster recovery in Hampton County and Allendale County
- Loss of network without redundant location outside of Beaufort County would affect all County government connectivity, and prevent personnel in all areas of emergency management, finance and treasury, law enforcement, public safety, and public works, from having communications involving the network (computer and telephone systems, traffic cameras, etc.)





# Dark Fiber and Infrastructure Upgrades



# Waddell Mariculture Center

- Estimated Cost: \$750,000
- Will provide for local funding that when combined with State matching funds, will provide \$1,000,000 for infrastructure repairs and continued economic development

